

Official Brochure ShowGames.com



# Hight Quality Material & Safety Systems :



## **Protective cover**

The body of the simulators are covered from a SOFT ,material polyurethane for anti trauma system .



## **Leather**

Is a true leather of cow , this for warranty resistance, High Quality , and amazing look.



## **Material**

Horns/Legs and particulars, of our Simulators is created Foam and cover with true Leather.



## **Push-button of Emergency** **All our Games works** **Without Operator**

Security Systems Games for children ,works so when the child sits on the game, the game starts because the button is pushed , when the child rises the game stops



## **Electric Blower**

Electrical professional Blower for Show Games Products this blower it is tested and perfect for Show Games inflatables , can't use different blower not authorized by Show Games.



## **Rope Safety Systems**

Installed on the back of the body of all our products , electro mechanical system protected by Intellectual and Patent international Property -when the player pull the rope the game starts, when leave the rope the game stops immediately.

## **Kit Setting up and Operated**

All Show Games Products it is equipped by personal Kit



# Easy Set Up

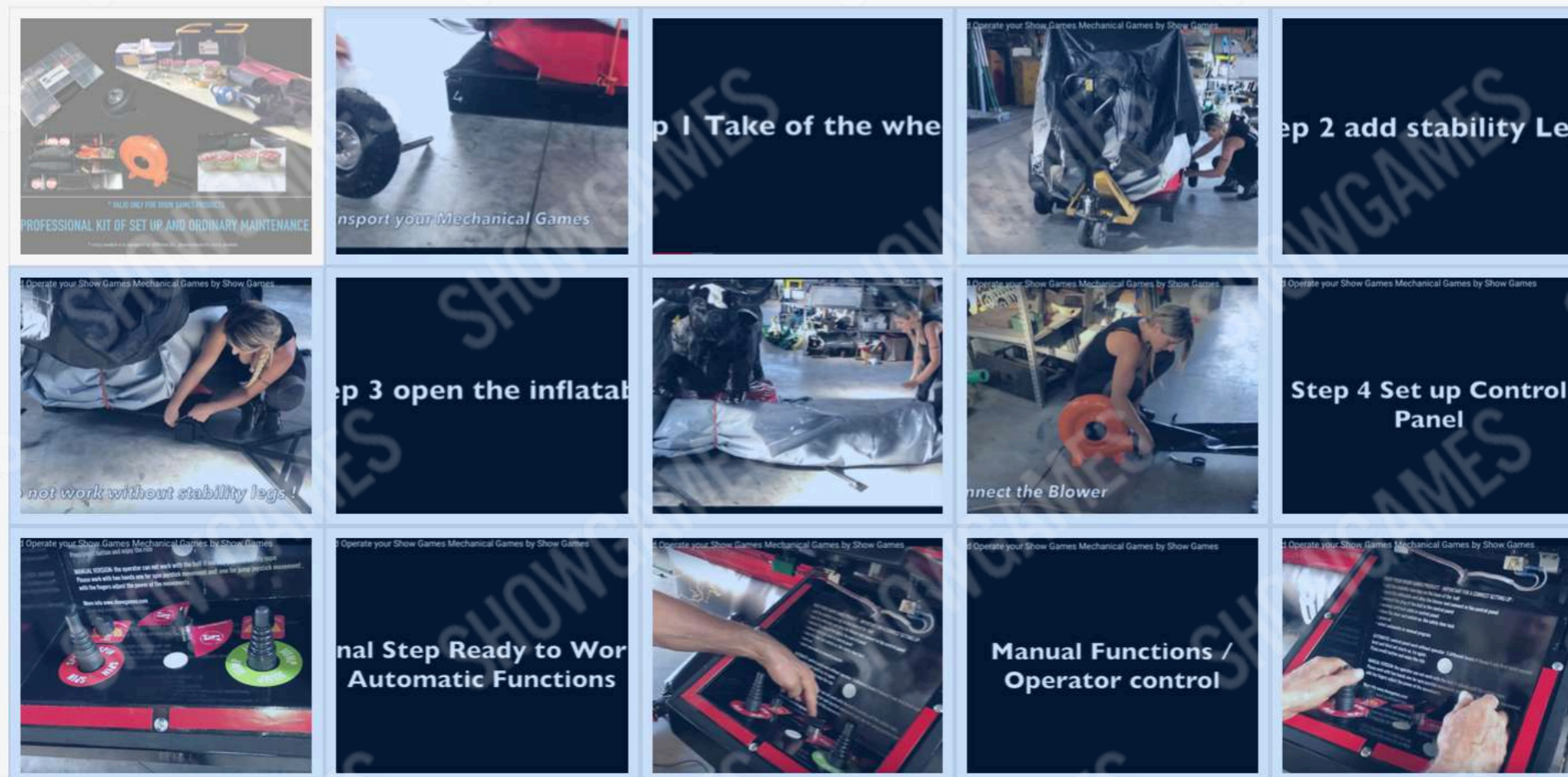
## HOW TO SET UP AND OPERATE YOUR MECHANICAL BULLS & CUSTOM RIDES

Only 15 Minutes & Just One Operator! (Easy set up even for Woman)

Set up and Operate your Mechanical Bulls & Multi-Rides by Show Games, Kit of Set Up and Ordinary maintenance it is included in your new purchase ( \* every product it is equipped by personal kit of set up and maintenance ).

5 Step and you are Ready!

It is totally very easy, even for woman! In a just 15 minutes you are ready for work with you Show Games Mechanical Custom Ride, or Mechanical Bulls.



<https://www.showgames.com/setupyourmechanicalbulls/>

[ceoshowgamesitaly@gmail.com](mailto:ceoshowgamesitaly@gmail.com) Wapp 0039 3427083126 ©® International Patent/Copyright all rights reserved by Show Games US LLC,  
Show Games Production di T.E, Show Games Invention di T.U, Show Games Italy srl



# Control Panel



## Control Pannel Big and Medium Model

- Connection net 220 VAC with 2poli socked EEC + earth

- Inverter of control power from 0,75 KW - until 5 KW depends from the model
- Inverter of control power from 1,50 KW - until 5 KW depends from the model
- Blower connect on the control panel not outside
- Button of emergency in line with normative of 2018 , easy to push ( for released pulled up )

## Characteristics Software

- manual version with operator , pull the rope for work ( if don't pull the rope the game doesn't work )
- Automatic system controlled by CPU system , with 3 different levels , speed programmed , movement casual .

Controlled by Rope System

- 1 play maximum 99 second
- Counter installed on control panel permit the visualization of the seconds of every play , at the final of the play , the riders can visualized the total of the play .

## Options

- Tiket Distributor
- Coin Box ( Comestero)
- Card Systems
- Banknote electronic selectors



## Manual Command for Big Size Select Manual Control

Find inside to the control panel the : Two Joystick disposed with the Potentiometer for the speed power . Jump and Spin movement it's available , Operator increase the power gradually. Stops of the machine it is immediately when the player leave the Rope.



## Door lock Switch

The Door Lock Switch it is installed on every control panel of Show Games Products , machine work and switch on just when the Doors Lock Switch it is close property



## Coin Box Selector

- Tiket Distributor or Coin Box ( Comestero)
- Card Systems or Banknote electronic selectors , are available .
- The play start just when the player pay the ride or press the button of credit



## Air Cooling

Control panel it is equipped by Air cooling systems to work with hot or cold temperature .



## Plugs

All our products are equipped with CEE Plugs in line with a world wide normative , to prevent safety of the operator .



## Emergency Button

Interrupting arrest of Safety. The stop button is placed in very visible position on the consul. It instantaneously blocks the operation of the game.



# Custom Design



## CUSTOM ART RIDES & PROMOTIONAL TOURS

Thanks to our Experience on Mechanical Systems & Hand-Crafted, the most Famous Big Brand and Companies has request to Show Games, personal Customized-Design.

It is very simple , send to us your Idea, Pictures or Project, mascotte or design and we make for you.

You don't have any idea? don't worry we take care of your project with our professional Designers, Engineers and Artists.

Our Clients include Major Brands such as MacDonalds, Decathlon, Ricola, Heineken, Bayer, Budweiser, Fiat, Samsung, Wrangler, Bacardi, Parque Reunidos, and many more has chose us.

Custom-designed, it is perfect too for Tours & Events, create now your new brand '..... Rodeo Challenge!' Here some our Examples:



**We can Create your  
custom design today!**

# Custom Design



Mechanical Fluorescent Horse for Mirabilandia Park ,Parque Reunidos



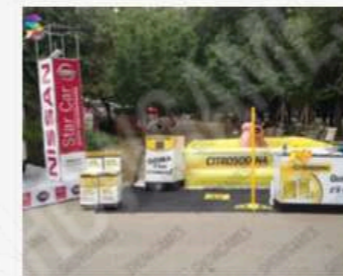
Mechanical Pig for Brand Rovagnati



Mechanical Megataur Huntik Cartoon, for Rainbow Magic Land



Stomach for citrosodina Brand Bayer



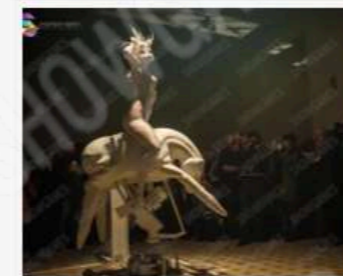
Mechanical Snow Board simulator for Badweiser , Mc Donald , Samsung and many more ...



Mechanical Project for Bud Light



Mechanical Arts for Artis Franco lo Svizzero



Mechanical Sofa for Bacardi & DMAX canale 52



Mechanical Surf Customized for Sweet Years & Channel K2, 41



And Many More Custom Art Rides ....



| DIMENSIONS INFLATABLE | mt.          | inch.  |
|-----------------------|--------------|--------|
| Lenght                | 4,80         | 196    |
| Width                 | 4,80         | 196    |
| Height                | 1,20         | 47     |
| DIMENSIONS BODY       |              |        |
| Lenght                | 2,10         | 83     |
| Width                 | 0,90         | 36     |
| Height                | 1,00         | 40     |
| ELECTRIC POWER        |              |        |
| Console Supply        | 220 volt     |        |
| Current Consume       | 5/6 kw       |        |
| Socket                | plug 16 amp. |        |
| Total Height          | 1,70 mtr.    | 67     |
| Total Weight          | 350 kgs      | 771 lb |

**The Mechanical Big Size** Is a wonderful attraction for family entertainment events, parties, clubs, festivals, beer festivals, amusement parks etc. ... It recommended mainly for adults but also suitable for children.

**Security Systems integrate ,work without operator.**

**Simulator includes**, inflatable 4,80x4,80 mtr.,Blower,Console automatic and Manual with security system integrated (work without operator, and with operator) when you Pull the Rope the Game Starts when you Release the Rope the Game Stops Immediately,kit for maintenance,cd-r manual of the user, n.2 pvc covers one for game one for console, n.4 iron steel for stability. N.10 Years Warranty (excluding wear material) completely handmade, **made in Italy**

**Specific Product:**

- Body fiberglass covered, Genuine Leather
- Padded with Polyurethane
- PVC Inflatable colors on request
- Inflatable security protective walls
- Security sensor rope on the back
- Coin box comparative or electronic
- Display stopwatch with 2 numbers
- Iron Stabilizer legs = 4
- Automatic and manual Control Panel





| DIMENSIONS INFLATABLE | mt.          | inch.  |
|-----------------------|--------------|--------|
| Lenght                | 4,80         | 196    |
| Width                 | 4,80         | 196    |
| Height                | 1,20         | 47     |
| DIMENSIONS BODY       |              |        |
| Lenght                | 2,10         | 83     |
| Width                 | 0,90         | 36     |
| Height                | 1,00         | 40     |
| ELECTRIC POWER        |              |        |
| Console Supply        | 220 volt     |        |
| Current Consume       | 5/6 kw       |        |
| Socket                | plug 16 amp. |        |
| Total Height          | 1,70 mtr.    | 67     |
| Total Weight          | 350 kgs      | 771 lb |

**The Mechanical Big Size** Is a wonderful attraction for family entertainment events, parties, clubs, festivals, beer festivals, amusement parks etc. ... It recommended mainly for adults but also suitable for children.

**Security Systems integrate ,work without operator.**

**Simulator includes**, inflatable 4,80x4,80 mtr.,Blower,Console automatic and Manual with security system integrated (work without operator, and with operator) when you Pull the Rope the Game Starts when you Release the Rope the Game Stops Immediately,kit for maintenance,cd-r manual of the user, n.2 pvc covers one for game one for console, n.4 iron steel for stability. N.10 Years Warranty (excluding wear material) completely handmade, **made in Italy**

**Specific Product:**

- Body fiberglass covered, Genuine Leather
- Padded with Polyurethane
- PVC Inflatable colors on request
- Inflatable security protective walls
- Security sensor rope on the back
- Coin box comparative or electronic
- Display stopwatch with 2 numbers
- Iron Stabilizer legs = 4
- Automatic and manual Control Panel





| DIMENSIONS INFLATABLE | mt.          | inch.  |
|-----------------------|--------------|--------|
| Lenght                | 4,80         | 196    |
| Width                 | 4,80         | 196    |
| Height                | 1,20         | 47     |
| DIMENSIONS BODY       |              |        |
| Lenght                | 2,10         | 83     |
| Width                 | 0,90         | 36     |
| Height                | 1,00         | 40     |
| ELECTRIC POWER        |              |        |
| Console Supply        | 220 volt     |        |
| Current Consume       | 5/6 kw       |        |
| Socket                | plug 16 amp. |        |
| Total Height          | 1,70 mtr.    | 67     |
| Total Weight          | 350 kgs      | 771 lb |



**The Mechanical Big Size** Is a wonderful attraction for family entertainment events, parties, clubs, festivals, beer festivals, amusement parks etc. ... It recommended mainly for adults but also suitable for children.

**Security Systems integrate ,work without operator.**

**Simulator includes**, inflatable 4,80x4,80 mtr.,Blower,Console automatic and Manual with security system integrated (work without operator, and with operator) when you Pull the Rope the Game Starts when you Release the Rope the Game Stops Immediately, kit for maintenance, cd-r manual of the user, n.2 pvc covers one for game one for console, n.4 iron steel for stability. N.10 Years Warranty (excluding wear material) completely handmade, **made in Italy**

#### Specific Product:

- Body fiberglass covered, Genuine Leather
- Padded with Polyurethane
- PVC Inflatable colors on request
- Inflatable security protective walls
- Security sensor rope on the back
- Coin box comparative or electronic
- Display stopwatch with 2 numbers
- Iron Stabilizer legs = 4
- Automatic and manual Control Panel



| DIMENSIONS INFLATABLE | mt.          | inch.  |
|-----------------------|--------------|--------|
| Lenght                | 4,80         | 196    |
| Width                 | 4,80         | 196    |
| Height                | 1,20         | 47     |
| DIMENSIONS BODY       |              |        |
| Lenght                | 2,10         | 83     |
| Width                 | 0,90         | 36     |
| Height                | 1,00         | 40     |
| ELECTRIC POWER        |              |        |
| Console Supply        | 220 volt     |        |
| Current Consume       | 5/6 kw       |        |
| Socket                | plug 16 amp. |        |
| Total Height          | 1,70 mtr.    | 67     |
| Total Weight          | 350 kgs      | 771 lb |

**The Mechanical Big Size** it is a professional Rodeo Training Machine, just for Expert and Professional Bull Rider. **Security Systems integrate, work without operator.**

**Simulator includes**, inflatable 4,80x4,80 mtr., Blower, Console automatic and Manual with security system integrated (work without operator, and with operator) when you Pull the Rope the Game Starts when you Release the Rope the Game Stops Immediately, kit for maintenance, cd-r manual of the user, n.2 pvc covers one for game one for console, n.4 iron steel for stability. N.10 Years Warranty (excluding wear material) completely handmade, **made in Italy**

**Specific Product:**

- Body fiberglass covered, Genuine Leather
- Padded with Polyurethane
- PVC Inflatable colors on request
- Inflatable security protective walls
- Security sensor rope on the back
- Coin box comparative or electronic
- Display stopwatch with 2 numbers
- Iron Stabilizer legs = 4
- Automatic and manual Control Panel





| DIMENSIONS INFLATABLE | mt.          | inch.  |
|-----------------------|--------------|--------|
| Lenght                | 4,80         | 196    |
| Width                 | 4,80         | 196    |
| Height                | 1,20         | 47     |
| DIMENSIONS BODY       |              |        |
| Lenght                | 2,10         | 83     |
| Width                 | 0,90         | 36     |
| Height                | 1,00         | 40     |
| ELECTRIC POWER        |              |        |
| Console Supply        | 220 volt     |        |
| Current Consume       | 5/6 kw       |        |
| Socket                | plug 16 amp. |        |
| Total Height          | 1,70 mtr.    | 67     |
| Total Weight          | 350 kgs      | 771 lb |

**The Mechanical Big Size** Is a wonderful attraction for family entertainment events, parties, clubs, festivals, beer festivals, amusement parks etc. ...  
It recommended mainly for adults but also suitable for children.

**Security Systems integrate ,work without operator.**

**Simulator includes**, inflatable 4,80x4,80 mtr.,Blower,Console automatic and Manual with security system integrated (work without operator, and with operator) when you Pull the Rope the Game Starts when you Release the Rope the Game Stops Immediately,kit for maintenance,cd-r manual of the user, n.2 pvc covers one for game one for console, n.4 iron steel for stability. N.10 Years Warranty (excluding wear material) completely handmade, **made in Italy**

**Specific Product:**

- Body fiberglass covered, Genuine Leather
- Padded with Polyurethane
- PVC Inflatable colors on request
- Inflatable security protective walls
- Security sensor rope on the back
- Coin box comparative or electronic
- Display stopwatch with 2 numbers
- Iron Stabilizer legs = 4
- Automatic and manual Control Panel





| DIMENSIONS INFLATABLE | mt.          | inch.  |
|-----------------------|--------------|--------|
| Lenght                | 4,80         | 196    |
| Width                 | 4,80         | 196    |
| Height                | 1,20         | 47     |
| DIMENSIONS BODY       |              |        |
| Lenght                | 2,10         | 83     |
| Width                 | 0,90         | 36     |
| Height                | 1,00         | 40     |
| ELECTRIC POWER        |              |        |
| Console Supply        | 220 volt     |        |
| Current Consume       | 5/6 kw       |        |
| Socket                | plug 16 amp. |        |
| Total Height          | 1,70 mtr.    | 67     |
| Total Weight          | 350 kgs      | 771 lb |

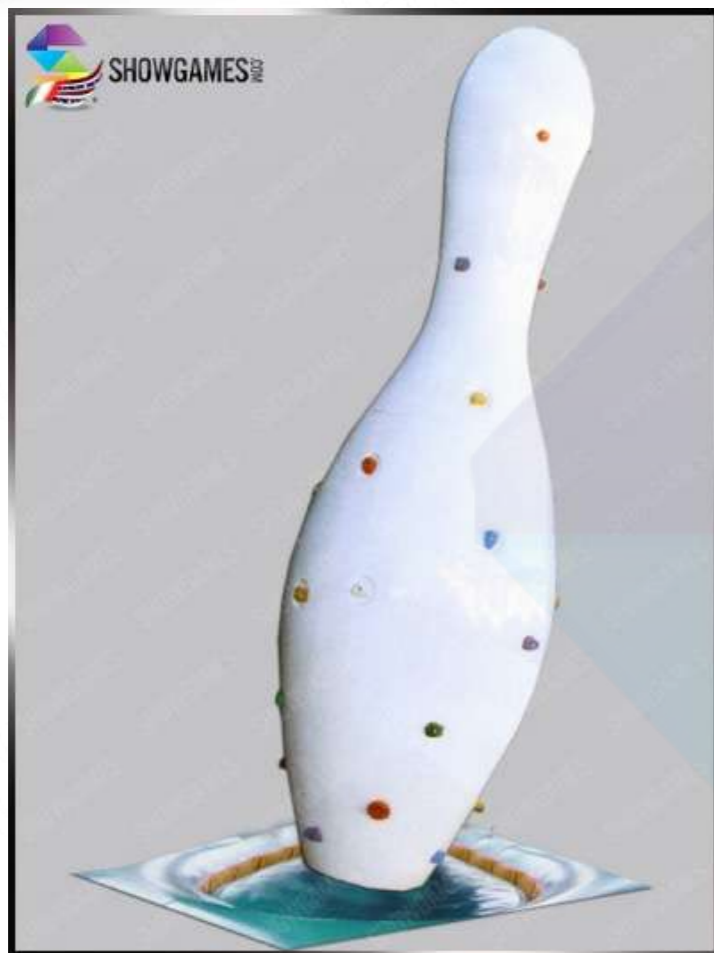
**The Mechanical Big Size** Is a wonderful attraction for family entertainment events, parties, clubs, festivals, beer festivals, amusement parks etc. ... It recommended mainly for adults but also suitable for children. Security Systems integrate ,work without operator.

**Simulator includes**, inflatable 4,80x4,80 mtr.,Blower,Console automatic and Manual with security system integrated (work without operator, and with operator) when you Pull the Rope the Game Starts when you Release the Rope the Game Stops Immediately,kit for maintenance,cd-r manual of the user, n.2 pvc covers one for game one for console, n.4 iron steel for stability. N.10 Years Warranty (excluding wear material) completely handmade, **made in Italy**

## Specific Product:

- Body fiberglass covered, Genuine Leather
- Padded with Polyurethane
- PVC Inflatable colors on request
- Inflatable security protective walls
- Security sensor rope on the back
- Coin box comparative or electronic
- Display stopwatch with 2 numbers
- Iron Stabilizer legs = 4
- Automatic and manual Control Panel





| DIMENSIONS INFLATABLE | mt.          | inch.  |
|-----------------------|--------------|--------|
| Lenght                | 4,80         | 196    |
| Width                 | 4,80         | 196    |
| Height                | 1,20         | 47     |
| DIMENSIONS BODY       |              |        |
| Lenght                | 2,10         | 83     |
| Width                 | 0,90         | 36     |
| Height                | 1,00         | 40     |
| ELECTRIC POWER        |              |        |
| Console Supply        | 220 volt     |        |
| Current Consume       | 5/6 kw       |        |
| Socket                | plug 16 amp. |        |
| Total Height          | 1,70 mtr.    | 67     |
| Total Weight          | 350 kgs      | 771 lb |

**The Mechanical Big Size** Is a wonderful attraction for family entertainment events, parties, clubs, festivals, beer festivals, amusement parks etc. ... It recommended mainly for adults but also suitable for children.

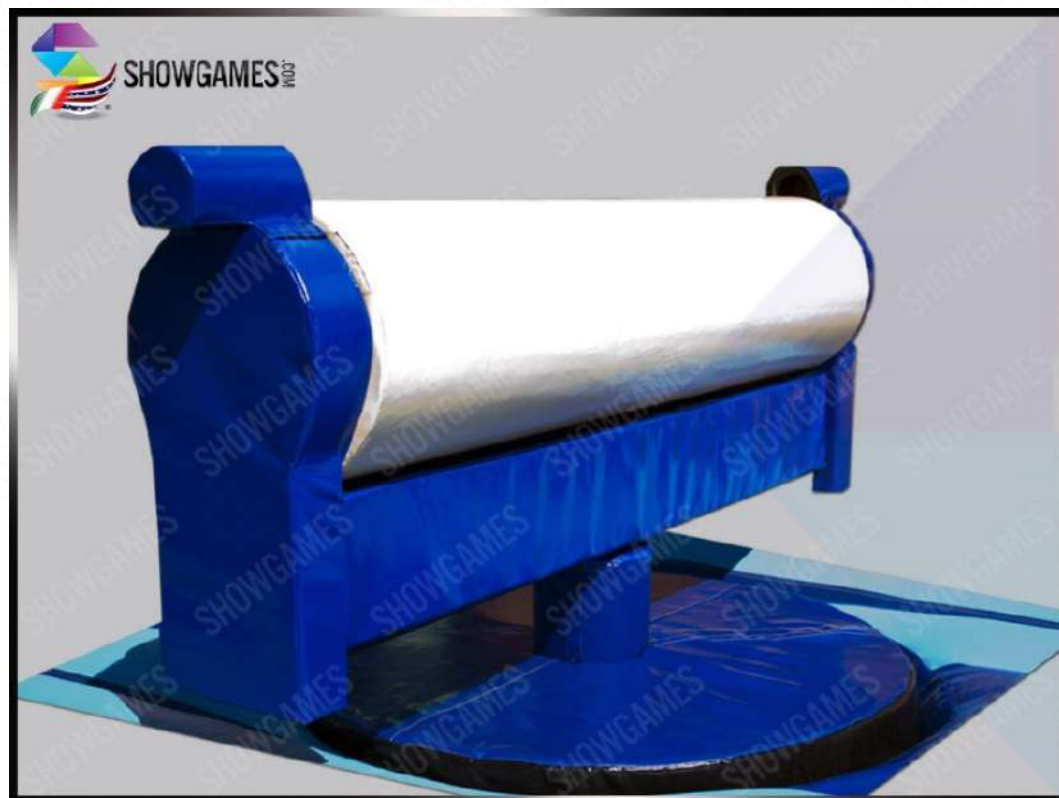
**Security Systems integrate ,work without operator.**

**Simulator includes**, inflatable 4,80x4,80 mtr.,Blower,Console automatic and Manual with security system integrated (work without operator, and with operator) when you Pull the Rope the Game Starts when you Release the Rope the Game Stops Immediately,kit for maintenance,cd-r manual of the user, n.2 pvc covers one for game one for console, n.4 iron steel for stability. N.10 Years Warranty (excluding wear material) completely handmade, **made in Italy**

**Specific Product:**

- Body fiberglass covered, Genuine Leather
- Padded with Polyurethane
- PVC Inflatable colors on request
- Inflatable security protective walls
- Security sensor rope on the back
- Coin box comparative or electronic
- Display stopwatch with 2 numbers
- Iron Stabilizer legs = 4
- Automatic and manual Control Panel





| DIMENSIONS INFLATABLE | mt.          | inch.  |
|-----------------------|--------------|--------|
| Lenght                | 4,80         | 196    |
| Width                 | 4,80         | 196    |
| Height                | 1,20         | 47     |
| DIMENSIONS BODY       |              |        |
| Lenght                | 2,10         | 83     |
| Width                 | 0,90         | 36     |
| Height                | 1,00         | 40     |
| ELECTRIC POWER        |              |        |
| Console Supply        | 220 volt     |        |
| Current Consume       | 5/6 kw       |        |
| Socket                | plug 16 amp. |        |
| Total Height          | 1,70 mtr.    | 67     |
| Total Weight          | 350 kgs      | 771 lb |

**The Mechanical Big Size** Is a wonderful attraction for family entertainment events, parties, clubs, festivals, beer festivals, amusement parks etc. ... It recommended mainly for adults but also suitable for children.

**Security Systems integrate ,work without operator.**

**Simulator includes**, inflatable 4,80x4,80 mtr.,Blower,Console automatic and Manual with security system integrated (work without operator, and with operator) when you Pull the Rope the Game Starts when you Release the Rope the Game Stops immediately kit for maintenance,cd-r manual of the user, n.2 pvc covers one for game one for console, n.4 iron steel for stability. N.10 Years Warranty (excluding wear material) completely handmade, **made in Italy**

### Specific Product:

- Body fiberglass covered, Genuine Leather
- Padded with Polyurethane
- PVC Inflatable colors on request
- Inflatable security protective walls
- Security sensor rope on the back
- Coin box comparative or electronic
- Display stopwatch with 2 numbers
- Iron Stabilizer legs = 4
- Automatic and manual Control Panel





| DIMENSIONS INFLATABLE | mt.          | inch.  |
|-----------------------|--------------|--------|
| Lenght                | 3,60         | 158    |
| Width                 | 3,60         | 158    |
| Height                | 0,90         | 36     |
| DIMENSIONS BODY       |              |        |
| Lenght                | 1,75         | 69     |
| Width                 | 0,65         | 26     |
| Height                | 0,75         | 30     |
| ELECTRIC POWER        |              |        |
| Console Supply        | 220 volt     |        |
| Current Consume       | 4/5 kw       |        |
| Socket                | plug 16 amp. |        |
| Total Height          | 1,40 mtr.    | 56     |
| Total Weight          | 250 kgs      | 551 lb |

**The Mechanical Medium Size** Is a wonderful attraction for family entertainment events, parties, clubs, festivals, beer festivals, amusement parks etc. ..  
It recommended mainly for adults but also suitable for children, available on Fluorescent Version .  
**Control Panel Automatic Work without Operator.**

**Simulator includes,** inflatable 3,60x3,60 mtr.,Blower,Console only automatic with security system integrated (work without operator, and with operator) when you Pull the Rope the Game Starts when you Release the Rope the Game Stops immediately,kit for maintenance,cd-r manual of the user, n.2 pvc covers one for game one for console, n.4 Iron steel for stability. N.5 Years Warranty (excluding wear material) completely handmade, **made in Italy**  
*In all Medium Model , you can enter all figure you want of the Medium Size, by changing only the body of the simulator example: Snow Board, Football Games and many more....*

- Specific Product:
- **Body fiberglass covered , Genuine Leather**
  - Padded with polyurethane • PVC Inflatable colors on request
  - Stabilizer legs = 4 • Inflatable security protective walls
  - Security sensor rope on the back• Coin box comparative or electronic
  - Display stopwatch with 2 numbers• Console automatic
  - Console Supply: 220V• Max Waste: 3 Kw
  - Current- Tap: Plug 16 Ampere• Total Weight: 250 kg.
  - Total Height: 1.40 mt. Only Made in Italy

The body is Interchangeable





| DIMENSIONS INFLATABLE | mt.          | inch.  |
|-----------------------|--------------|--------|
| Lenght                | 3,60         | 158    |
| Width                 | 3,60         | 158    |
| Height                | 0,90         | 36     |
| DIMENSIONS BODY       |              |        |
| Lenght                | 1,75         | 69     |
| Width                 | 0,65         | 26     |
| Height                | 0,75         | 30     |
| ELECTRIC POWER        |              |        |
| Console Supply        | 220 volt     |        |
| Current Consume       | 4/5 kw       |        |
| Socket                | plug 16 amp. |        |
| Total Height          | 1,40 mtr.    | 56     |
| Total Weight          | 250 kgs      | 551 lb |

The Mechanical Medium Size Is a wonderful attraction for family entertainment events, parties, clubs, festivals, beer festivals, amusement parks etc. ... It recommended mainly for adults but also suitable for children.  
**Control Panel Automatic Work without Operator.**

**Simulator includes,** inflatable 3,60x3,60 mtr.,Blower,Console only automatic with security system integrated (work without operator, and with operator) when you Pull the Rope the Game Starts when you Release the Rope the Game Stops immediately,kit for maintenance,cd-r manual of the user, n.2 pvc covers one for game one for console, n.4 Iron steel for stability. N.5 Years Warranty (excluding wear material) completely handmade, **made in Italy**  
*In all Medium Model , you can enter all figure you want of the Medium Size, by changing only the body of the simulator example: Snow Board, Football Games and many more....*

- Specific Product:
- Body fiberglass covered , Genuine Leather
  - Padded with polyurethane • PVC Inflatable colors on request
  - Stabilizer legs = 4 • Inflatable security protective walls
  - Security sensor rope on the back• Coin box comparative or electronic
  - Display stopwatch with 2 numbers• Console automatic
  - Console Supply: 220V• Max Waste: 3 Kw
  - Current- Tap: Plug 16 Ampere• Total Weight: 250 kg.
  - Total Height: 1.40 mt. Only Made in Italy

The body is Interchangeable





| DIMENSIONS INFLATABLE | mt.          | inch.  |
|-----------------------|--------------|--------|
| Lenght                | 3,60         | 158    |
| Width                 | 3,60         | 158    |
| Height                | 0,90         | 36     |
| DIMENSIONS BODY       |              |        |
| Lenght                | 1,75         | 69     |
| Width                 | 0,65         | 26     |
| Height                | 0,75         | 30     |
| ELECTRIC POWER        |              |        |
| Console Supply        | 220 volt     |        |
| Current Consume       | 4/5 kw       |        |
| Socket                | plug 16 amp. |        |
| Total Height          | 1,40 mtr.    | 56     |
| Total Weight          | 250 kgs      | 551 lb |

The Mechanical Medium Size Is a wonderful attraction for family entertainment events, parties, clubs, festivals, beer festivals, amusement parks etc. ... It recommended mainly for adults but also suitable for children.

Control Panel Automatic Work without Operator.

Simulator includes, inflatable 3,60x3,60 mtr.,Blower,Console only automatic with security system integrated (work without operator, and with operator) when you Pull the Rope the Game Starts when you Release the Rope the Game Stops immediately,kit for maintenance,cd-r manual of the user, n.2 pvc covers one for game one for console, n.4 Iron steel for stability. N.5 Years Warranty (excluding wear material) completely handmade, **made in Italy**

In all Medium Model , you can enter all figure you want of the Medium Size, by changing only the body of the simulator example: Snow Board, Football Games and many more....

- Specific Product:
- Body fiberglass covered , Genuine Leather

• Padded with polyurethane • PVC Inflatable colors on request

• Stabilizer legs = 4 • Inflatable security protective walls

• Security sensor rope on the back• Coin box comparative or electronic

• Display stopwatch with 2 numbers• Console automatic

• Console Supply: 220V• Max Waste: 3 Kw

• Current- Tap: Plug 16 Ampere• Total Weight: 250 kg.

• Total Height: 1.40 mt. Only Made in Italy

The body is Interchangeable





| DIMENSIONS INFLATABLE | mt.          | inch.  |
|-----------------------|--------------|--------|
| Lenght                | 3,60         | 158    |
| Width                 | 3,60         | 158    |
| Height                | 0,90         | 36     |
| DIMENSIONS BODY       |              |        |
| Lenght                | 1,75         | 69     |
| Width                 | 0,65         | 26     |
| Height                | 0,75         | 30     |
| ELECTRIC POWER        |              |        |
| Console Supply        | 220 volt     |        |
| Current Consume       | 4/5 kw       |        |
| Socket                | plug 16 amp. |        |
| Total Height          | 1,40 mtr.    | 56     |
| Total Weight          | 250 kgs      | 551 lb |

The Mechanical Medium Size Is a wonderful attraction for family entertainment events, parties, clubs, festivals, beer festivals, amusement parks etc. ... It recommended mainly for adults but also suitable for children.

Control Panel Automatic Work without Operator.

Simulator includes, inflatable 3,60x3,60 mtr.,Blower,Console only automatic with security system integrated (work without operator, and with operator) when you Pull the Rope the Game Starts when you Release the Rope the Game Stops immediately,kit for maintenance,cd-r manual of the user, n.2 pvc covers one for game one for console, n.4 Iron steel for stability. N.5 Years Warranty (excluding wear material) completely handmade, made in Italy

In all Medium Model , you can enter all figure you want of the Medium Size, by changing only the body of the simulator example: Snow Board, Football Games and many more....

- Specific Product:
- Body fiberglass covered , Genuine Leather
  - Padded with polyurethane • PVC Inflatable colors on request
  - Stabilizer legs = 4 • Inflatable security protective walls
  - Security sensor rope on the back• Coin box comparative or electronic
  - Display stopwatch with 2 numbers• Console automatic
  - Console Supply: 220V• Max Waste: 3 Kw
  - Current- Tap: Plug 16 Ampere• Total Weight: 250 kg.
  - Total Height: 1.40 mt. Only Made in Italy

The body is Interchangeable





| DIMENSIONS INFLATABLE | mt.          | inch.  |
|-----------------------|--------------|--------|
| Lenght                | 3,60         | 158    |
| Width                 | 3,60         | 158    |
| Height                | 0,90         | 36     |
| DIMENSIONS BODY       |              |        |
| Lenght                | 1,75         | 69     |
| Width                 | 0,65         | 26     |
| Height                | 0,75         | 30     |
| ELECTRIC POWER        |              |        |
| Console Supply        | 220 volt     |        |
| Current Consume       | 4/5 kw       |        |
| Socket                | plug 16 amp. |        |
| Total Height          | 1,40 mtr.    | 56     |
| Total Weight          | 250 kgs      | 551 lb |

The Mechanical Medium Size i Is a wonderful attraction for family entertainment events, parties, clubs, festivals, beer festivals, amusement parks etc. ...  
It recommended mainly for adults but also suitable for children.  
**Control Panel Automatic Work without Operator.**

**Simulator includes,** inflatable 3,60x3,60 mtr.,Blower,Console only automatic with security system integrated (work without operator, and with operator) when you Pull the Rope the Game Starts when you Release the Rope the Game Stops immediately,kit for maintenance,cd-r manual of the user, n.2 pvc covers one for game one for console, n.4 Iron steel for stability. N.5 Years Warranty (excluding wear material) completely handmade, **made in Italy**  
*In all Medium Model , you can enter all figure you want of the Medium Size, by changing only the body of the simulator example: Snow Board, Football Games and many more....*

- Specific Product:
- Body fiberglass covered , Genuine Leather

• Padded with polyurethane • PVC Inflatable colors on request

• Stabilizer legs = 4 • Inflatable security protective walls

• Security sensor rope on the back• Coin box comparative or electronic

• Display stopwatch with 2 numbers• Console automatic

• Console Supply: 220V• Max Waste: 3 Kw

• Current- Tap: Plug 16 Ampere• Total Weight: 250 kg.

• Total Height: 1.40 mt. Only Made in Italy

The body is Interchangeable





| DIMENSIONS INFLATABLE | mt.          | inch.  |
|-----------------------|--------------|--------|
| Lenght                | 3,60         | 158    |
| Width                 | 3,60         | 158    |
| Height                | 0,90         | 36     |
| DIMENSIONS BODY       |              |        |
| Lenght                | 1,75         | 69     |
| Width                 | 0,65         | 26     |
| Height                | 0,75         | 30     |
| ELECTRIC POWER        |              |        |
| Console Supply        | 220 volt     |        |
| Current Consume       | 4/5 kw       |        |
| Socket                | plug 16 amp. |        |
| Total Height          | 1,40 mtr.    | 56     |
| Total Weight          | 250 kgs      | 551 lb |

The Mechanical Medium Size Is a wonderful attraction for family entertainment events, parties, clubs, festivals, beer festivals, amusement parks etc. ... It recommended mainly for adults but also suitable for children..

**Control Panel Automatic Work without Operator.**

**Simulator includes,** inflatable 3,60x3,60 mtr.,Blower,Console only automatic with security system integrated (work without operator, and with operator) when you Pull the Rope the Game Starts when you Release the Rope the Game Stops immediately,kit for maintenance,cd-r manual of the user, n.2 pvc covers one for game one for console, n.4 Iron steel for stability. N.5 Years Warranty (excluding wear material) completely handmade, **made in Italy**

*In all Medium Model , you can enter all figure you want of the Medium Size, by changing only the body of the simulator example: Snow Board, Football Games and many more....*

- Specific Product:**
- **Body fiberglass covered , Genuine Leather**
  - Padded with polyurethane • PVC Inflatable colors on request
  - Stabilizer legs = 4 • Inflatable security protective walls
  - Security sensor rope on the back• Coin box comparative or electronic
  - Display stopwatch with 2 numbers• Console automatic
  - Console Supply: 220V• Max Waste: 3 Kw
  - Current- Tap: Plug 16 Ampere• Total Weight: 250 kg.
  - Total Height: 1.40 mt. Only Made in Italy

The body is Interchangeable





| DIMENSIONS INFLATABLE | mt.          | inch.  |
|-----------------------|--------------|--------|
| Lenght                | 3,60         | 158    |
| Width                 | 3,60         | 158    |
| Height                | 0,90         | 36     |
| DIMENSIONS BODY       |              |        |
| Lenght                | 1,75         | 69     |
| Width                 | 0,65         | 26     |
| Height                | 0,75         | 30     |
| ELECTRIC POWER        |              |        |
| Console Supply        | 220 volt     |        |
| Current Consume       | 4/5 kw       |        |
| Socket                | plug 16 amp. |        |
| Total Height          | 1,40 mtr.    | 56     |
| Total Weight          | 250 kgs      | 551 lb |

The Mechanical Medium Size Is a wonderful attraction for family entertainment events, parties, clubs, festivals, beer festivals, amusement parks etc. ... It recommended mainly for adults but also suitable for children..

**Control Panel Automatic Work without Operator.**

**Simulator includes,** inflatable 3,60x3,60 mtr.,Blower,Console only automatic with security system integrated (work without operator, and with operator) when you Pull the Rope the Game Starts when you Release the Rope the Game Stops immediately,kit for maintenance,cd-r manual of the user, n.2 pvc covers one for game one for console, n.4 Iron steel for stability. N.5 Years Warranty (excluding wear material) completely handmade, **made in Italy**

*In all Medium Model , you can enter all figure you want of the Medium Size, by changing only the body of the simulator example: Snow Board, Football Games and many more....*

- Specific Product:**
- **Body fiberglass covered , Genuine Leather**
  - Padded with polyurethane • PVC Inflatable colors on request
  - Stabilizer legs = 4 • Inflatable security protective walls
  - Security sensor rope on the back• Coin box comparative or electronic
  - Display stopwatch with 2 numbers• Console automatic
  - Console Supply: 220V• Max Waste: 3 Kw
  - Current- Tap: Plug 16 Ampere• Total Weight: 250 kg.
  - Total Height: 1.40 mt. Only Made in Italy

The body is Interchangeable





| DIMENSIONS INFLATABLE | mt.          | inch.  |
|-----------------------|--------------|--------|
| Lenght                | 3,60         | 158    |
| Width                 | 3,60         | 158    |
| Height                | 0,90         | 36     |
| DIMENSIONS BODY       |              |        |
| Lenght                | 1,75         | 69     |
| Width                 | 0,65         | 26     |
| Height                | 0,75         | 30     |
| ELECTRIC POWER        |              |        |
| Console Supply        | 220 volt     |        |
| Current Consume       | 4/5 kw       |        |
| Socket                | plug 16 amp. |        |
| Total Height          | 1,40 mtr.    | 56     |
| Total Weight          | 250 kgs      | 551 lb |

The Mechanical Medium Size Is a wonderful attraction for family entertainment events, parties, clubs, festivals, beer festivals, amusement parks etc. .. It recommended mainly for adults but also suitable for children.  
**Control Panel Automatic Work without Operator.**

**Simulator includes,** inflatable 3,60x3,60 mtr.,Blower,Console only automatic with security system integrated (work without operator, and with operator) when you Pull the Rope the Game Starts when you Release the Rope the Game Stops immediately,kit for maintenance,cd-r manual of the user, n.2 pvc covers one for game one for console, n.4 Iron steel for stability. N.5 Years Warranty (excluding wear material) completely handmade, **made in Italy**

*In all Medium Model , you can enter all figure you want of the Medium Size, by changing only the body of the simulator example: Snow Board, Football Games and many more....*

- Specific Product:**
- **Body fiberglass covered , Genuine Leather**
  - Padded with polyurethane • PVC Inflatable colors on request
  - Stabilizer legs = 4 • Inflatable security protective walls
  - Security sensor rope on the back• Coin box comparative or electronic
  - Display stopwatch with 2 numbers• Console automatic
  - Console Supply: 220V• Max Waste: 3 Kw
  - Current- Tap: Plug 16 Ampere• Total Weight: 250 kg.
  - Total Height: 1.40 mt. Only Made in Italy

The body is Interchangeable



Medium Size Category : Mechanical Drinking Can Custom Medium Size Code:SGI9M



| DIMENSIONS INFLATABLE | mt.          | inch.  |
|-----------------------|--------------|--------|
| Lenght                | 3,60         | 158    |
| Width                 | 3,60         | 158    |
| Height                | 0,90         | 36     |
| DIMENSIONS BODY       |              |        |
| Lenght                | 1,75         | 69     |
| Width                 | 0,65         | 26     |
| Height                | 0,75         | 30     |
| ELECTRIC POWER        |              |        |
| Console Supply        | 220 volt     |        |
| Current Consume       | 4/5 kw       |        |
| Socket                | plug 16 amp. |        |
| Total Height          | 1,40 mtr.    | 56     |
| Total Weight          | 250 kgs      | 551 lb |

The Mechanical Medium Size is a wonderful attraction for events, parties, clubs, festivals, beer festivals, theme nights, playground, amusement parks etc. ... It recommended mainly for adults and for children.

Control Panel Automatic Work without Operator.

Simulator includes, inflatable 3,60x3,60 mtr., Blower, Console only automatic with security system integrated (work without operator, and with operator) when you Pull the Rope the Game Starts when you Release the Rope the Game Stops immediately, kit for maintenance, cd-r manual of the user, n.2 pvc covers one for game one for console, n.4 Iron steel for stability. N.5 Years Warranty (excluding wear material) completely handmade, made in Italy

In all Medium Model , you can enter all figure you want of the Medium Size, by changing only the body of the simulator example: Snow Board, Football Games and many more....

- Specific Product:
- Body fiberglass covered , Genuine Leather
  - Padded with polyurethane • PVC Inflatable colors on request
  - Stabilizer legs = 4 • Inflatable security protective walls
  - Security sensor rope on the back • Coin box comparative or electronic
  - Display stopwatch with 2 numbers • Console automatic
  - Console Supply: 220V • Max Waste: 3 Kw
  - Current- Tap: Plug 16 Ampere • Total Weight: 250 kg.
  - Total Height: 1.40 mt. Only Made in Italy

The body is Interchangeable





| DIMENSIONS INFLATABLE | mt.          | inch.  |
|-----------------------|--------------|--------|
| Lenght                | 3,60         | 158    |
| Width                 | 3,60         | 158    |
| Height                | 0,90         | 36     |
| DIMENSIONS BODY       |              |        |
| Lenght                | 1,75         | 69     |
| Width                 | 0,65         | 26     |
| Height                | 0,75         | 30     |
| ELECTRIC POWER        |              |        |
| Console Supply        | 220 volt     |        |
| Current Consume       | 4/5 kw       |        |
| Socket                | plug 16 amp. |        |
| Total Height          | 1,40 mtr.    | 56     |
| Total Weight          | 250 kgs      | 551 lb |

The Mechanical Medium Size is a wonderful attraction for events, parties, clubs, festivals, beer festivals, theme nights, playground, amusement parks etc. ... It recommended mainly for adults and for children.

Control Panel Automatic Work without Operator.

Simulator includes, inflatable 3,60x3,60 mtr., Blower, Console only automatic with security system integrated (work without operator, and with operator) when you Pull the Rope the Game Starts when you Release the Rope the Game Stops immediately, kit for maintenance, cd-r manual of the user, n.2 pvc covers one for game one for console, n.4 Iron steel for stability. N.5 Years Warranty (excluding wear material) completely handmade, made in Italy

In all Medium Model , you can enter all figure you want of the Medium Size, by changing only the body of the simulator example: Snow Board, Football Games and many more....

- Specific Product:
- Body fiberglass covered , Genuine Leather
  - Padded with polyurethane • PVC Inflatable colors on request
  - Stabilizer legs = 4 • Inflatable security protective walls
  - Security sensor rope on the back • Coin box comparative or electronic
  - Display stopwatch with 2 numbers • Console automatic
  - Console Supply: 220V • Max Waste: 3 Kw
  - Current- Tap: Plug 16 Ampere • Total Weight: 250 kg.
  - Total Height: 1.40 mt. Only Made in Italy

The body is Interchangeable





| DIMENSIONS INFLATABLE | mt.          | inch.  |
|-----------------------|--------------|--------|
| Lenght                | 3,60         | 158    |
| Width                 | 3,60         | 158    |
| Height                | 0,90         | 36     |
| DIMENSIONS BODY       |              |        |
| Lenght                | 1,75         | 69     |
| Width                 | 0,65         | 26     |
| Height                | 0,75         | 30     |
| ELECTRIC POWER        |              |        |
| Console Supply        | 220 volt     |        |
| Current Consume       | 4/5 kw       |        |
| Socket                | plug 16 amp. |        |
| Total Height          | 1,40 mtr.    | 56     |
| Total Weight          | 250 kgs      | 551 lb |

**The Mechanical Medium/Middle Size** Is a wonderful attraction for family entertainment events, parties, clubs, festivals, beer festivals, amusement parks etc. .. It recommended mainly for adults but also suitable for children.

**Control Panel Automatic Work without Operator.**

**Simulator includes**, inflatable 3,60x3,60 mtr.,Blower,Console only automatic with security system integrated (work without operator, and with operator) when you Pull the Rope the Game Starts when you Release the Rope the Game Stops immediately,kit for maintenance,cd-r manual of the user, n.2 pvc covers one for game one for console, n.4 Iron steel for stability. N.5 Years Warranty (excluding wear material) completely handmade, **made in Italy**

*In all Medium Model , you can enter all figure you want of the Medium Size, by changing only the body of the simulator example: Snow Board, Football Games and many more....*

**Specific Product:** • **Body fiberglass covered , Genuine Leather**

- Padded with polyurethane • PVC Inflatable colors on request
- Stabilizer legs = 4 • Inflatable security protective walls
- Security sensor rope on the back • Coin box comparative or electronic
- Display stopwatch with 2 numbers • Console automatic
- Console Supply: 220V • Max Waste: 3 Kw
- Current- Tap: Plug 16 Ampere • Total Weight: 250 kg.
- Total Height: 1.40 mt. Only Made in Italy

**The body is Interchangeable**





| DIMENSIONS INFLATABLE | mt.          | inch.  |
|-----------------------|--------------|--------|
| Lenght                | 3,60         | 158    |
| Width                 | 3,60         | 158    |
| Height                | 0,90         | 36     |
| DIMENSIONS BODY       |              |        |
| Lenght                | 1,75         | 69     |
| Width                 | 0,65         | 26     |
| Height                | 0,75         | 30     |
| ELECTRIC POWER        |              |        |
| Console Supply        | 220 volt     |        |
| Current Consume       | 4/5 kw       |        |
| Socket                | plug 16 amp. |        |
| Total Height          | 1,40 mtr.    | 56     |
| Total Weight          | 250 kgs      | 551 lb |

**The Mechanical Medium/Middle Size** Is a wonderful attraction for family entertainment events, parties, clubs, festivals, beer festivals, amusement parks etc. .. It recommended mainly for adults but also suitable for children.

**Control Panel Automatic Work without Operator.**

**Simulator includes**, inflatable 3,60x3,60 mtr.,Blower,Console only automatic with security system integrated (work without operator, and with operator) when you Pull the Rope the Game Starts when you Release the Rope the Game Stops immediately,kit for maintenance,cd-r manual of the user, n.2 pvc covers one for game one for console, n.4 Iron steel for stability. N.5 Years Warranty (excluding wear material) completely handmade, **made in Italy**

*In all Medium Model , you can enter all figure you want of the Medium Size, by changing only the body of the simulator example: Snow Board, Football Games and many more....*

**Specific Product:** • **Body fiberglass covered , Genuine Leather**

- Padded with polyurethane • PVC Inflatable colors on request
- Stabilizer legs = 4 • Inflatable security protective walls
- Security sensor rope on the back• Coin box comparative or electronic
- Display stopwatch with 2 numbers• Console automatic
- Console Supply: 220V• Max Waste: 3 Kw
- Current- Tap: Plug 16 Ampere• Total Weight: 250 kg.
- Total Height: 1.40 mt. Only Made in Italy

**The body is Interchangeable**



# Small Size Category :

**Mechanical Elephant Small** Code:SGI6S



**Mechanical Bull Small** Code:SGI3S



**Mechanical Bison Small** Code:SGI2S



**Mechanical Camel Small** Code:SGI4S



**Mechanical Small Size** is a wonderful attraction for children until 6 years old . **Control Panel Automatic Work** without Operator.

**Simulator includes**, inflatable or sponge covered by pac 1.50x1,70 mtr. Console only automatic **with security system integrated work without operator**, when the child sits the game starts, when the baby gets up the game stops immediately.

|                       |              |        |
|-----------------------|--------------|--------|
| <b>ELECTRIC POWER</b> |              |        |
| Console Supply        | 220 volt     |        |
| Current Consume       | 1 kw         |        |
| Socket                | plug 16 amp. |        |
| Total Height          | 0,90 mtr.    |        |
| <b>Total Weight</b>   | 80 kgs       | 176 lb |



# Small Size Category :

**Mechanical Caterpillar Small** Code:SGI5S



**Mechanical Football Small** Code:SGI7S



**Mechanical Kola Small** Code:SGI9S



**Mechanical Panda Small** Code:SGI10S



**Mechanical Small Size** is a wonderful attraction for children until 6 years old . **Control Panel Automatic Work without Operator.**

**Simulator includes,** inflatable or sponge covered by pac 1.50x1,70 mtr. Console only automatic with security system integrated work without operator, when the child sits the game starts, when the baby gets up the game stops immediately.

|                       |              |        |
|-----------------------|--------------|--------|
| <b>ELECTRIC POWER</b> |              |        |
| Console Supply        | 220 volt     |        |
| Current Consume       | 1 kw         |        |
| Socket                | plug 16 amp. |        |
| Total Height          | 0,90 mtr.    |        |
| <b>Total Weight</b>   | 80 kgs       | 176 lb |



# Small Size Category :

**Mechanical Bear Small** Code:SGI1S



**Mechanical Reindeer Small** Code:SGI11S



**Mechanical Small Version with 3 Protective Walls** Code:SGI13S



**Mechanical Small Size** is a wonderful attraction for children until 6 years old . **Control Panel Automatic Work** without Operator.

**Simulator includes**, inflatable or sponge covered by pac 1.50x1,70 mtr. Console only automatic **with security system integrated work** without operator, when the child sits the game starts, when the baby gets up the game stops immediately.

|                       |              |        |
|-----------------------|--------------|--------|
| <b>ELECTRIC POWER</b> |              |        |
| Console Supply        | 220 volt     |        |
| Current Consume       | 1 kw         |        |
| Socket                | plug 16 amp. |        |
| Total Height          | 0,90 mtr.    |        |
| <b>Total Weight</b>   | 80 kgs       | 176 lb |



# Category Other Simulator and Games :

## Mechanical Boxing Simulator Double and Single Version Code:SGI10SG , SGI20SG



**Mechanical Boxing Simulator** is a wonderful attraction for Adults , this is a games for speed reflex not of strength.

**Specific Product:** Body covered foam, pvc and poliuretane,PVC Inflatable colors on request,Coin box comparative or electronic, Display stopwatch with 2 numbers, Console automatic work without operator.

| ELECTRIC POWER  |              | Technical Data |            | Mt. /Inch. |
|-----------------|--------------|----------------|------------|------------|
| Console Supply  | 220v         |                | Max Length | 2,80 / 111 |
| Current Consume | 2/3 kw       |                | Max Width  | 1,20/48    |
| Socket          | plug 16 amp. |                | Max Height | 2,10/83    |
| Total Height    | 0,90 mtr.    | 36             |            |            |
| Total Weight    | 80 kgs       | 176 lb         |            |            |



# Category Other Simulator and Games :

## Mechanical Horse Dressage Professional Code:SGI3OSG



**Mechanical Horse Dressage Professional is a perfect machine for sports training of Dressage.**

**Specific Product:** Body fiberglass covered , Genuine Leather,Foam covered with pvc ,Wheels n.4, Console automatic and manual, Function Walking,Trotting and Gallops. The Simulator included Cart and n.4 wheels for transport, Control panel with long cable, Manual Version , and n.3 different program .

| ELECTRIC POWER  |              | Technical Data |  | Mt. /Inch. |
|-----------------|--------------|----------------|--|------------|
| Console Supply  | 220v         | Max Length     |  | 2,80 / 111 |
| Current Consume | 2/4 kw       | Max Width      |  | 1,20/48    |
| Socket          | plug 16 amp. | Max Height     |  | 2,10/83    |
| Total Height    | 0,90 mtr.    | 36             |  |            |
| Total Weight    | 80 kgs       | 176 lb         |  |            |



# Category Other Simulator and Games :

Si Dan Punch Ball      Code:SGL4OSG



**Mechanical Si Dan Punch Ball , is a wonderful attraction for adults.**  
**Specific Product:** Body fiberglass covered true dress of football , Foam Protection ,Iron Base, Control Panel automatic,Function, when insert a coni the player rolls a header in the chest, the display counts the warhead.

| ELECTRIC POWER  |              |        | Technical Data | Mt. /Inch. |
|-----------------|--------------|--------|----------------|------------|
| Console Supply  | 220v         |        | Max Length     | 2,80 / 111 |
| Current Consume | 2/4 kw       |        | Max Width      | 1,20/48    |
| Socket          | plug 16 amp. |        | Max Height     | 2,10/83    |
| Total Height    | 0,90 mtr.    | 36     |                |            |
| Total Weight    | 80 kgs       | 176 lb |                |            |



# Category Other Simulator and Games :

## Shopping Cart Animated Code:SGL5OSG



The Revolutionary Shopping Cart Animated by Show Games, is a wonderful attraction for children, recommended for all Shopping Center,

This Shopping Cart is not only useful, but also fun. The child is secured to the subject (example Bison or Horse or many more), the child moves the subject making swinging .

**Specific Product:** Body material fiberglass,Padded with polyurethane, and genuine leather, Shopping cart on Aluminum

**Technical Data:** Standard Measures Only Made in Italy.



## Category Other Simulator and Games :



### Mechanical Happy Medieval Palio customized Code:SGI6OSG

The game starts without any operator or with an operator chosen from you; you can choose horse (or other animal) you prefer to use.

The game does not start until the security belt is hooked and it blocks. The horse (or other animal) gallops for the entire trail, recreating the real gallop of real horses. Inside the trail there is a target moving toward east and west and rotating; the players will have to hit the target with their spear, on the top of the animal.

**This Attraction is available at any theme you want: EGYPTIAN, MEDIEVAL, JUNGLE, ARABIC as your imagination wants.**

Only Made in Italy

**Specific Product:** Body material fiberglass, Padded with polyurethane, and genuine leather, Shopping cart on Aluminum

**Technical Data:** Standard Measures Only Made in Italy.

### Mechanical Happy Swimming Pool with the Animals Code:SGI7OSG

**Happy Swimming Area:**

**The New Attractions for your Amusement !!!**

The Animals recreate the true movement of aquatic animals, the player can ride, hang the animal as he wants.

The animal will lead the player all the way.

Equipped with outboard engine, no electricity in the pool, the mechanism is applicable to existing pools or new pools.

**THE ATTRACTION OF THE YEAR FOR YOUR ENJOYMENT !!!**

# Category Other Simulator and Games :

## Water Surf Pneumatic Code:SGL8OSG



### The New Attractions for your Amusement !!!

Surf Simulation in pool, the games work by Control Panel Manual , and all Pneumatic Mechanism work with Compress Air  
Specific Product: Body Material fiberglass, Padded with polyurethane , and pvc first quality.

**Only Made in Italy Available in Dolphin and trunk version**

| ELECTRIC POWER  |              | Inch.  | Technical Data | Mt. /Inch. |
|-----------------|--------------|--------|----------------|------------|
| Console Supply  | 220v         |        | Max Length     | 1,65/63    |
| Current Consume | 2/4 kw       |        | Max Width      | 0,75/ 30   |
| Socket          | plug 16 amp. |        | Max Height     | 0,65/26    |
| Total Height    | 1,60 mt.     | 63     |                |            |
| Total Weight    | 100 kgs      | 220 lb |                |            |



## Category Other Simulator and Games :

### Electric Surf Code:SGI9OSG



**Electric Surf**, the machine work by Control Panel Manual with a button operated by one feet, the helm is operated by other foot , the motor is secure electric motor and work with a battery rechargeable and all Pneumatic Mechanism work with Compress Air  
Specific Product: Body Material fiberglass.

| ELECTRIC POWER  |                        | Inch. | Technical Data | Mt. /Inch. |
|-----------------|------------------------|-------|----------------|------------|
| Speed           | 2/3 Nodes              |       | Max Length     | 1,65/63    |
| Current Consume | Plug 16 a for recharge |       | Max Width      | 0,75/ 30   |
| Socket          |                        |       | Max Height     | 0,65/26    |
| Total Height    | 100 kgs.               |       |                |            |
| Total Weight    | 1,70/1.80 mt.          | 67/72 |                |            |



## Category Other Simulator and Games :

**Mignon Games** Code:SGI100SG



**The Mignon Games** Wonderful game box for your children, simulates the bull riding that the cowboy dismounts enemy. Commanded by your children through the joystick, the game has a rechargeable battery, accessories by protection sponge covered by pvc

| Technical Data  | Mt. /Inch. |
|-----------------|------------|
| Max Body Length | 0,20 / 8   |
| Max Body Width  | 0,20 / 8   |
| Max Body Height | 0,30 / 11  |
| Total Weight    | 0.500 gr.  |
| Battery Life    | 1/2 hours  |



# Category Kiddie Rides :

Rides Pegasus Code:SGI2KR



Rides Reindeer Code:SGI1KR



**Specific Product:** Body fiberglass covered , Genuine Leather, Padded with polyurethane, Security sensor button on the back, Coin box comparative or electronic, Console automatic,N.3 Children max.  
**Functioning:** the Pegasus gallops and the Chariot follows him .

| Technical Data  | Mt. /Inch.        | Max Waste      |           |
|-----------------|-------------------|----------------|-----------|
| Max Body Length | 0.95 / 38         | Max Length     | 1,70 / 67 |
| Max Body Width  | 0,45 / 18         | Max Width      | 1,90 / 75 |
| Max Body Height | 0,55/ 21          | Max Height     | 1,10 / 44 |
| Total Weight    | 0.80 kg / 176 lb. | Console Supply | 220/110 v |
| Total Height    | 1.70 / 67         | Current -Tap   | 0.75 kw   |



# Category Kiddie Rides :

Series Spring Code:SG1SSR



**Specific Product:** Body material Suede,PVC Inflatable colors on request, No electricity needed.

| Technical Data  | Mt. /Inch.        | Max Waste  |           |
|-----------------|-------------------|------------|-----------|
| Max Body Length | 0.95 / 38         | Max Length | 1,00 / 40 |
| Max Body Width  | 0,45 / 18         | Max Width  | 1,00 / 40 |
| Max Body Height | 0,55/ 21          | Max Height | 0.30/ 17  |
| Total Weight    | 0.80 kg / 176 lb. |            |           |
| Total Height    | 1,00 / 40         |            |           |



# Sculpture and Advertising :



## CHICKEN Code:SGI2OAB

Rotary movement, position standing or spit. Recommended for restaurants and other theme place

## DOLPHIN Code:SGI3OAB

Jump Movement. Available on (Bull /Horse/ Camel and many more. )

## MECHANICAL STANDARD ADVERTISING Code:SGI4OAB

Rotary movement, position standing or spit. Recommended for restaurants and other theme place available on ( Bottle , pin with ball and many more)

And many more ..

A spectacular and innovative way to catches the attention of the interlocutor , thanks to the movement of the object and to the “exaggerated” size of the different subjects.

### Custom Products

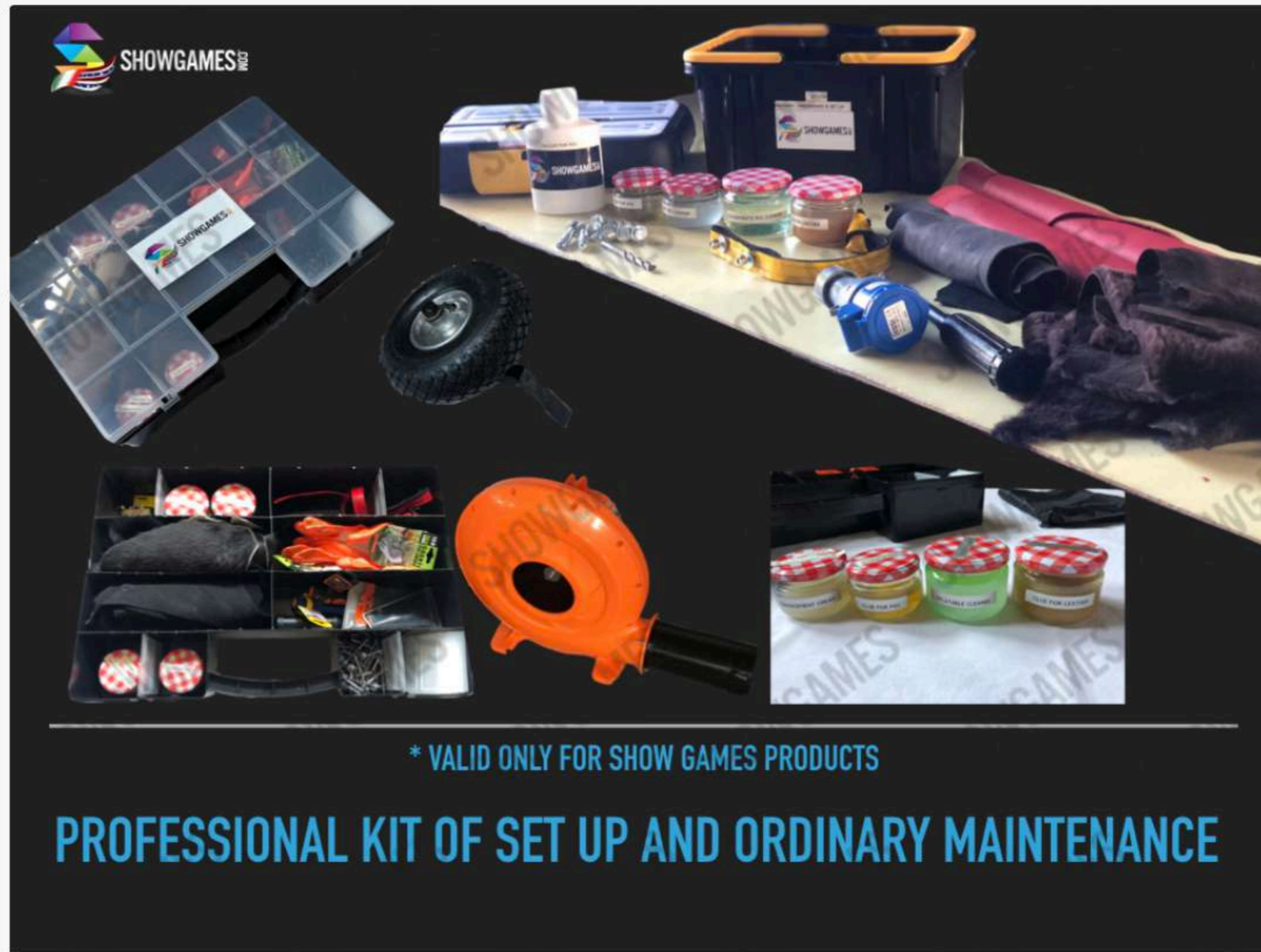
**Show Games** make every attraction like unique, is the result of a long study, followed by a careful handwork in every details. For this reason we can offer to the customers creative and innovative products , creating prototypes on request, and customized attractions .



# Standard Accessories :

## ACCESSORIES & SPARE PARTS

In this Page you can find Accessories and Spare parts for you Mechanical Bulls and Mechanical MultiRides, if don't find what you need or you need motor, electric, or mechanical spare part or accessories , write at this email [inquiryshowgames@gmail.com](mailto:inquiryshowgames@gmail.com).



\* VALID ONLY FOR SHOW GAMES PRODUCTS

## PROFESSIONAL KIT OF SET UP AND ORDINARY MAINTENANCE

<https://www.showgames.com/products/accessories/>



# Standard Accessories:

CONTROL PANEL AVAILABLE ON  
AUTOMATIC AND MANUAL VERSION



INFLATABLE DIFFERENT STYLE  
FOR BIG/ MEDIUM / SMALL



INFLATABLE TENTS CUSTOMIZE  
WITH YOUR LOGO



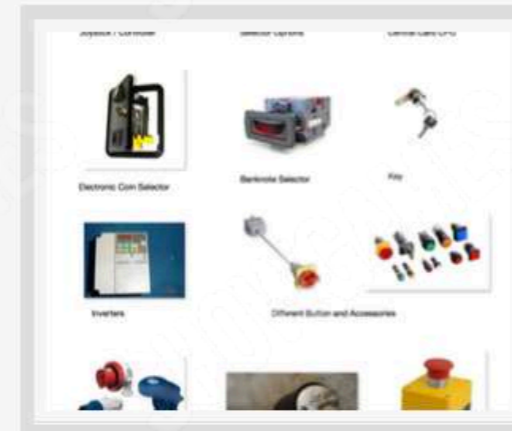
LEGS & WHEELS FOR STABILITY OF  
MECHANICAL GAMES  
BIG AND MEDIUM SIZE



BLOWER-FAN FOR INFLATABLES



ACCESSORIES FOR CONTROL PANEL



#mechanical bull #mechanical games #games #entertainment #amusement park #fun #show #kiddie rides #inflatable #multirides #rides #action obstacle

<https://www.showgames.com/products/accessories/>



# Revenue Projection:

## Estimation and Analysis Show Games - Mechanical Medium Attraction Family entertainment from 6+ years old Price 25.000 euro Basic Games

| CAPACITY                            | UNITS              |
|-------------------------------------|--------------------|
| Number of Passengers                | 1                  |
| Passangers Capacity                 | 1 every 60 seconds |
| Number of operating hours per day   | 8                  |
| Estimated Daily Passenger Capacity  | 480                |
| Estimated Annual Passenger Capacity | 115,200            |

| REVENUE PROJECTION     | EU-UAE +                  | USA                        |
|------------------------|---------------------------|----------------------------|
| Average ticket price   | Euro 2,00                 | Dollars 5\$                |
| Time per play 1 minute | Euro 2,00 every 1 Minutes | Dollars 5,00 every minutes |
| Earnings per 1 Hour    | Euro 118,00               | Dollars 30.000,00          |
| Earnings per 8 Hours   | Euro 944,00               | Dollars 2.400,00           |
| Earnings per Week      | Euro 6.608,00             | Dollars 16.800,00          |
| Gross Annual Income    | Euro 344.560,00           | Dollars 873.600,00         |

### Yearly Economical Cost Report

|                                  | EU-UAE +              | USA                       |
|----------------------------------|-----------------------|---------------------------|
| Gross income                     | Euro 344.560,00       | Dollars 873.600,00        |
| Expenses:                        |                       |                           |
| Cost of Basic Machine            | Euro 25.000,00        | Dollars 26.500,00         |
| Maintenance                      | Euro 15.000,00        | Dollars 10.000,00         |
| Payroll Operators                | Euro 00,00            | Dollars 00,00             |
| Insurance                        | Euro 350,00           | Dollars 2.000,00          |
| Marketing Promotion              | Euro 3.500,00         | Dollars 4.500,00          |
| Transportation Cost for delivery | Euro 1.500,00         | Dollars 3.500,00          |
| <b>TOTAL OPERATING COST</b>      | <b>Euro 45.350,00</b> | <b>Dollars 46.500,00</b>  |
| <b>Net Profit :</b>              | <b>Euro 299,210</b>   | <b>Dollars 827.100,00</b> |

\*Report Data study from 1989 based on Show Games Customers  
\*Data are based on estimation only and cannot be guaranteed.



[ceoshowgamesitaly@gmail.com](mailto:ceoshowgamesitaly@gmail.com) Wapp 0039 3427083126 ©® International Patent/Copyright all rights reserved by Show Games US LLC,  
Show Games Production di T.E, Show Games Invention di T.U, Show Games Italy srl

<https://www.showgames.com/revenueprojection/>



[ceoshowgamesitaly@gmail.com](mailto:ceoshowgamesitaly@gmail.com) Wapp 0039 3427083126 ©® International Patent/Copyright all rights reserved by Show Games US LLC,  
Show Games Production di T.E, Show Games Invention di T.U, Show Games Italy srl

# Category List :

## BIG SIZE

|       |                                 |           |
|-------|---------------------------------|-----------|
| SGI1B | MECHANICAL HORSE BIG            | 4,80X4,80 |
| SGI2B | MECHANICAL BISON BIG            | 4,80X4,80 |
| SGI3B | MECHANICAL BULL BIG             | 4,80X4,80 |
| SGI4B | MECHANICAL BUCKING MAKINE       | 4,80X4,80 |
| SGI5B | MECHANICAL CAMEL BIG            | 4,80X4,80 |
| SGI6B | MECHANICAL BOTTLE FREE CLIMBING | 4,80X4,80 |
| SGI7B | MECHANICAL PIN FREE CLIMBING    | 4,80X4,80 |
| SGI8B | MECHANIC TRUNK ROTATING         | 4,80X4,80 |

## SMALL SIZE

|        |   |           |
|--------|---|-----------|
| SGI1S  | MECHANICAL BEAR <b>SPONGE</b>                             | 1,50X1,70 |
| SGI2S  | MECHANICAL BISON <b>SPONGE</b>                            | 1,50X1,70 |
| SGI3S  | MECHANICAL BULL <b>SPONGE</b>                             | 1,50X1,70 |
| SGI4S  | MECHANICAL CAMEL <b>SPONGE</b>                            | 1,50X1,70 |
| SGI5S  | MECHANICAL CATERPILLAR <b>SPONGE</b>                      | 1,50X1,70 |
| SGI6S  | MECHANICAL ELEPHANT <b>SPONGE</b>                         | 1,50X1,70 |
| SGI7S  | MECHANICAL FOOTBALL <b>SPONGE</b>                         | 1,50X1,70 |
| SGI8S  | MECHANICAL HORSE <b>SPONGE</b>                            | 1,50X1,70 |
| SGI9S  | MECHANICAL KOALA <b>SPONGE</b>                            | 1,50X1,70 |
| SGI10S | MECHANICAL PANDA <b>SPONGE</b>                            | 1,50X1,70 |
| SGI11S | MECHANICAL REINDER <b>SPONGE</b>                          | 1,50X1,70 |
| SGI12S | SERIES SMALL <b>WITH INFLATABLE</b>                       | 1,50X1,70 |
| SGI13S | SERIES SMALL <b>WITH SPONGE WITH N.3 PROTECTIVE WALLS</b> |           |

## OTHER SCULPTURE AND ADVERTISING BOARD

|         |   |
|---------|---|
| SGI10AB | MECHANICAL BOTTLE ADVERTISING             |
| SGI20AB | MECHANICAL CHIKEN ADVERTISING             |
| SGI30AB | MECHANICAL DHOLPIN/BULL/HORSE ADVETRISING |
| SGI40AB | MECHANICAL DHOLPIN/BULL/HORSE ADVETRISING |

## OTHER SCULPTURES

|        |                                   |
|--------|-----------------------------------|
| SGI10S | MECHANICAL ART SCULPTURE HOSRE    |
| SGI20S | MECH. ART SCULPTURE ROCKING CHAIR |
| SGI30S | RUBBISH BIN THEMATIC              |



## Category List :

### OTHER SIMULATORS AND GAMES

|          |   |          |
|----------|---|----------|
| SGI10SG  | MECHANICAL BOXING DUBLE AND SINGLE              | 1X2,50X2 |
| SGI20SG  | MECHANICAL BOXING SINGLE                        | 1X2,50X2 |
| SGI30SG  | MECHANICAL HORSE DRESSAGE                       | 2X1X1    |
| SGI40SG  | MECHANIC SI DAN PUNCH BALL                      | 2X2X2H   |
| SGI50SG  | SHOPPING CART ANIMATED                          | standard |
| SGI60SG  | MEDIEVAL HAPPY PALIO                            | measure  |
| SGI70SG  | HAPPY SWIMMING POOL WITH THE A.                 |          |
| SGI80SG  | PNEUMATIC WATER SURF/TRUNK/ DOLPHIN (FOR POOLS) |          |
| SGI90SG  | ELECTRIC SURF                                   | 2X1X1    |
| SGI100SG | MECHANICAL BULL BOXES                           |          |

### MEDIUM SIZE

|        |   |                        |
|--------|---|------------------------|
| SGI1M  | MECHANICAL MEDIUM HOSRE                 | 3,60X3,60              |
| SGI2M  | MECHANICAL MEDIUM BULL                  | 3,60X3,60              |
| SGI3M  | MECHANICAL MEDIUM BISON                 | 3,60X3,60              |
| SGI4M  | MECHANICAL MAGIC BROOM                  | 3,60X3,60              |
| SGI5M  | MECHANICAL MEDIUM DOLPHIN               | 4,14X4,14              |
| SGI6M  | MECHANICAL MEDIUM FOOTBALL              | 4,14X4,14              |
| SGI7M  | MECHANICAL MEDIUM CYLINDER              | 4,14X4,14              |
| SGI8M  | MECHANICAL MEDIUM SURF                  | 4,14X4,14              |
| SGI9M  | MECHANIC DRINKING CAN MEDIUM            | 3,60X3,60              |
| SGI10M | MECHANICAL MEDIUM SNOW                  | 3,60X3,60              |
| SGI11M | MECHANICAL BABY/MIDDLE BISON OR HORSE   | 3,60X3,60              |
| SGI12M | MECHANICAL REINDEER MEDIUM/ MIDDLE SIZE | 3,60X3,60<br>4,14X4,14 |

### KIDDIE RIDES

|         |  |           |
|---------|--|-----------|
| SGI1KR  | RIDES REINDEER                             | 1.70X1.90 |
| SGI2KR  | RIDES PEGASUS                              | 1.70X1.91 |
| SGI1SSR | SERIES SPRING ELEPHANT/BULL/HORSE/BEAR ... | 1,00X1,00 |



# Where we are :

M.Art Technology srl  
brand Show Games Italy & USA  
Italy  
Via delle Noveglie, 7 - 25080 Manerba d/G  
(BS) Italy  
Tel. +39 (0) 365 651368

USA  
13181 nw 43 rd avenue Opa loka, fl 33054

E-mail  
[info@showgames.com](mailto:info@showgames.com)  
[ceoshowgamesitaly@gmail.com](mailto:ceoshowgamesitaly@gmail.com)  
[ceo@m-artech.com](mailto:ceo@m-artech.com)

Mobile: 0039 3427083126

USA PHONE:+17542245171  
[www.youtube.com/showgamesinvention](http://www.youtube.com/showgamesinvention)  
[www.showgames.com](http://www.showgames.com)

